

# Ana Maria Maia

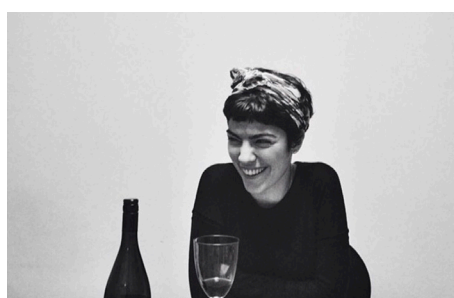
---

Professor, Researcher, and Independent Curator,  
São Paulo, Brazil

Article: [The 20 Most Influential Young Curators in Latin America](#)  
[Artsy Editorial](#) by Silas Marti

---

Maria Maia worked as assistant to Agnaldo Farias and Moacir dos Anjos, mainstays of the Brazilian art scene who spearheaded the 29th iteration of the Bienal de São Paulo seven years ago. Since then, she has expanded her influence in Brazil's biggest art circuit by presenting the work of some of the strongest artists of her native Recife, working with established figures like Paulo Bruscky and Montez Magno, as well as up-and-coming artists such as Amanda Melo. She also worked alongside Lisette Lagnado for the Museu de Arte Moderna de São Paulo's 33rd Panorama of Brazilian art, which invited artists to reinvent the Lina Bo Bardi-designed museum space; it's considered one of the most radical editions of this biennial show to date. More recently, she has been teaching art history and researching. And, in 2015, she published *Vehicle-Art: Interventions in the Brazilian Mass Media*, a book about historical art interventions in Brazilian mass media.



Recent career highlight: Her book *Vehicle-art: Interventions in the Brazilian Mass Media* (2015)

Portrait of Ana Maria Maia. Courtesy of Ana Maria Maia.